

INSTRUCTIONS

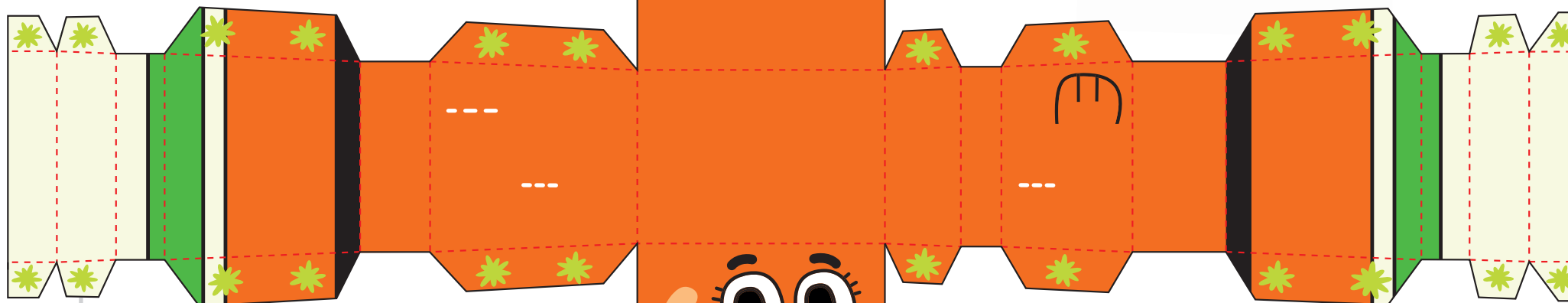
Be very careful and ask your parents to help when using scissors or cutters.

1

Cut around the main character and fold the dotted red lines. Carefully make cuts along the dotted white lines for the ears and arms to be put in at the end. Doing one side at a time, glue and stick the flaps marked with the ✨. Now let it dry.

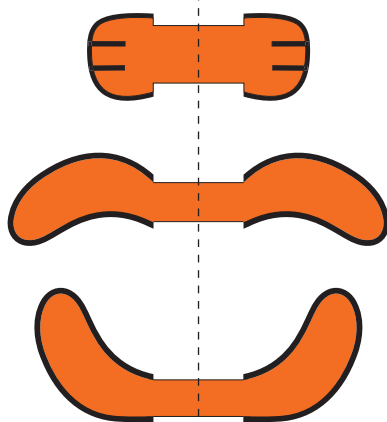
2

Cut out the box around the arms and ear. Carefully fold down the dotted line and make sure both sides match by holding them up to the light. Then glue together. When dry cut out the arms and ears and finish your very own Darwin, Gumball's best friend!



1

2



DARWIN

